

AKM Ball Valve Actuators



AKM actuators are designed for VKR and BKR series ball valves. The actuators can be used 2-point or 3-point control. AKM-UNI actuator can accept 0..10Vdc, 2-point or 3-point switched control signal. The actuators can be configured for linear, quadratic or equal percentage characteristics.

Power Supply: AKM-24: 24Vac ±20%, 50 /60Hz
AKM-230: 230Vac ±15%, 50/60Hz
AKM-UNI: 24Vac ±20%, 50/60Hz

Running Time: AKM-24/230: 120 secs
AKM-230-F: 30 secs
AVM-UNI: Adj 35/65/120 secs

Rotation Angle: 90°

Max Medium Temp: 100°C at Valve

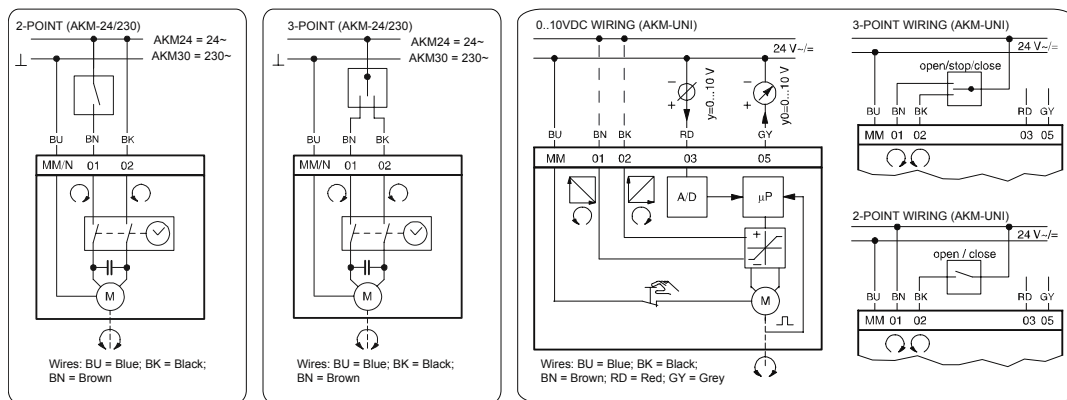
Ambient Temp: -10..55°C

Protection: IP54

Dimensions: Enclosure: W126 x H70 x D114 mm

PART NO	DESCRIPTION
AKM-230	2/3-Point 230Vac Actuator for Ball Valves
AKM-230-30	2/3-Point 230Vac Actuator for Ball Valves, 30s Rotation Time
AKM-24	2/3-Point 24Vac Actuator for Ball Valves
AKM-UNI	0..10Vdc/2-Point/3-Point Actuator for Ball Valves, 24Vac Power Supply
AKM-SK-001	Single Auxiliary Change-Over Contacts for AKM10V Actuator
AKM-SK-002	Double Auxiliary Change-Over Contacts for AKM10V Actuator

WIRING DIAGRAM:-



AKF Ball Valve Actuators with Spring Return



AKF actuators are designed for VKR and BKR series ball valves. The actuators can be used 2-point, 3-point or 0..10Vdc control. In case of power failure the spring return closes the valve to original position. Direction of rotation can be changed by mounting other way around.

Power Supply: AKF-230-2PT: 230Vac ±10%, max 7VA
AKF-24-2PT: 24Vac ±20%, max 5VA
AKF-24-3PT: 24Vac ±20%, max 5VA
AKF-10V: 24Vac ±20%, max 5VA

Running Time: Motor: 90 secs
Spring: 15 secs

Rotation Angle: Max. 95°

Max Medium Temp: 100°C at Valve

Ambient Temp: -32..55°C

Protection: IP54

Dimensions: Enclosure: W185 x H84 x D104 mm

PART NO	DESCRIPTION
AKF-230-2PT	230Vac Rotary Drive, 2-Point Control, with Spring Return for Ball Valves
AKF-24-2PT	24Vac/dc Rotary Drive, 2-Point Control, with Spring Return for Ball Valves
AKF-24-3PT	24Vac/dc Rotary Drive, 3-Point Control, for Ball Valves with Power Fail Spring Return
AKF-10V	24Vac Rotary Drive with 0..10VDC Control Signal, Power Fail Spring Return

WIRING DIAGRAM:-

